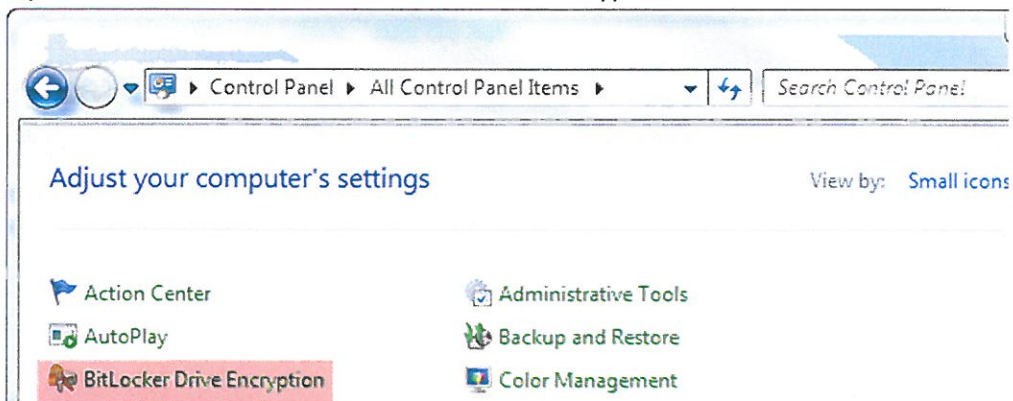


BitLocker To Go – Encrypting Your USB Drive with BitLocker To Go

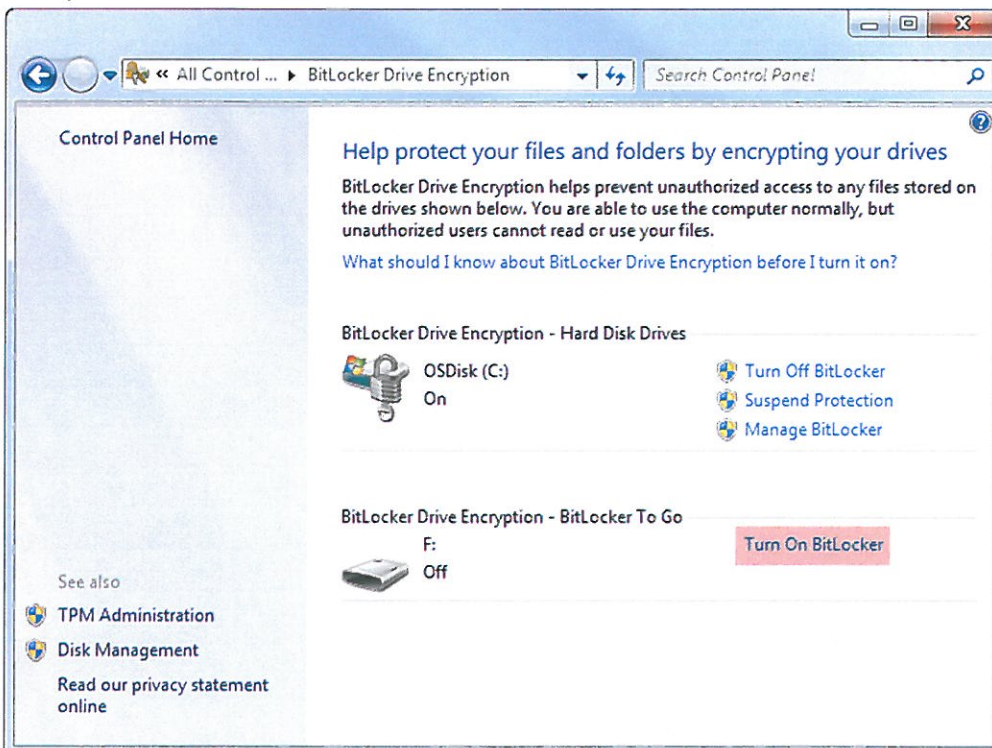
BitLocker To Go is a feature of Windows 7, Windows 8, and Windows 8.1 that allows you to encrypt a removable storage device. When you encrypt the drive, you will set a password. That password will be the key to unlocking the drive and allowing you to use it.

You are able to read and write to BitLocker to Go drives if you're using a Windows 7, Windows 8, or Windows 8.1 operating system. You are only able to Read files from the encrypted drive when you are using Windows XP or Windows Vista. BitLocker To Go drives will not work on a Mac operating system. If you need to use a flash drive on a Mac then we recommend using one of our other approved hardware-encrypted USB drives.

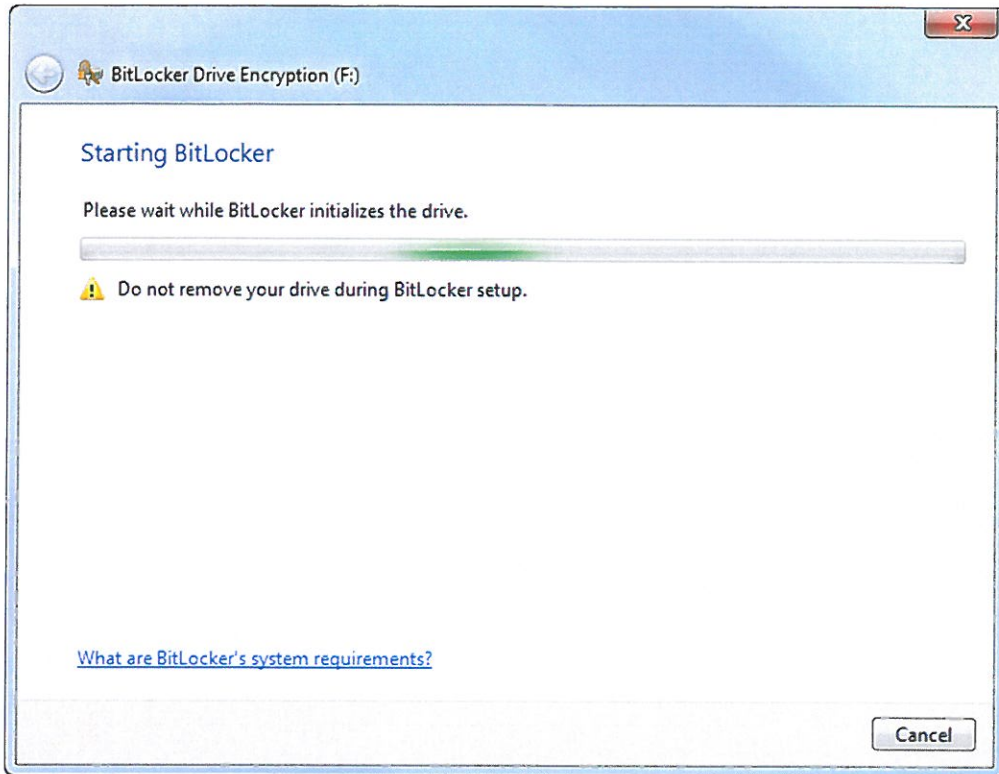
- 1) Plug the USB flash drive into your Windows 7 computer
- 2) Open Control Panel and click BitLocker Drive Encryption



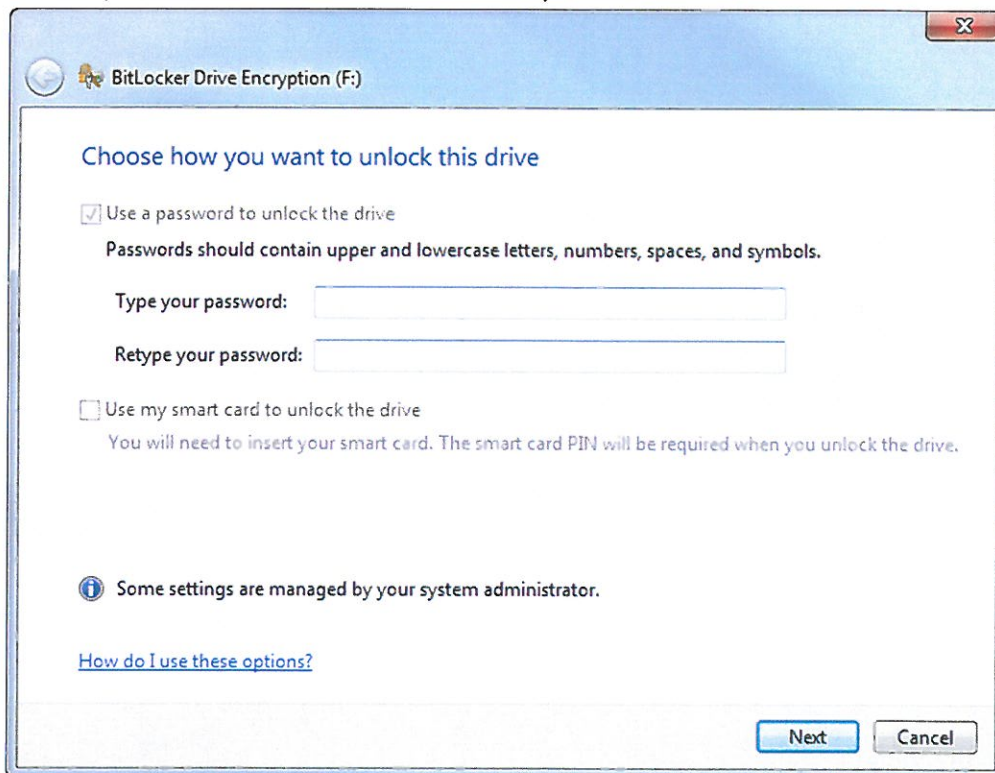
- 3) Find your drive under the BitLocker To Go section and click Turn On BitLocker



- 4) BitLocker will then initialize the drive

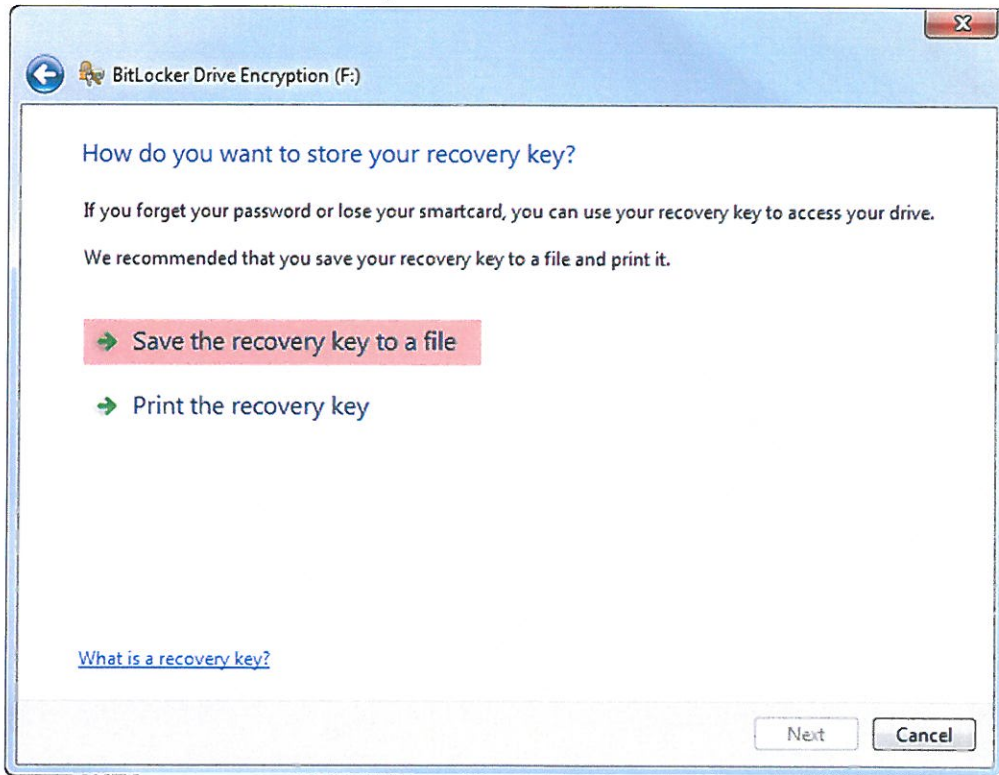


- 5) Enter a password for the device in the fields provided

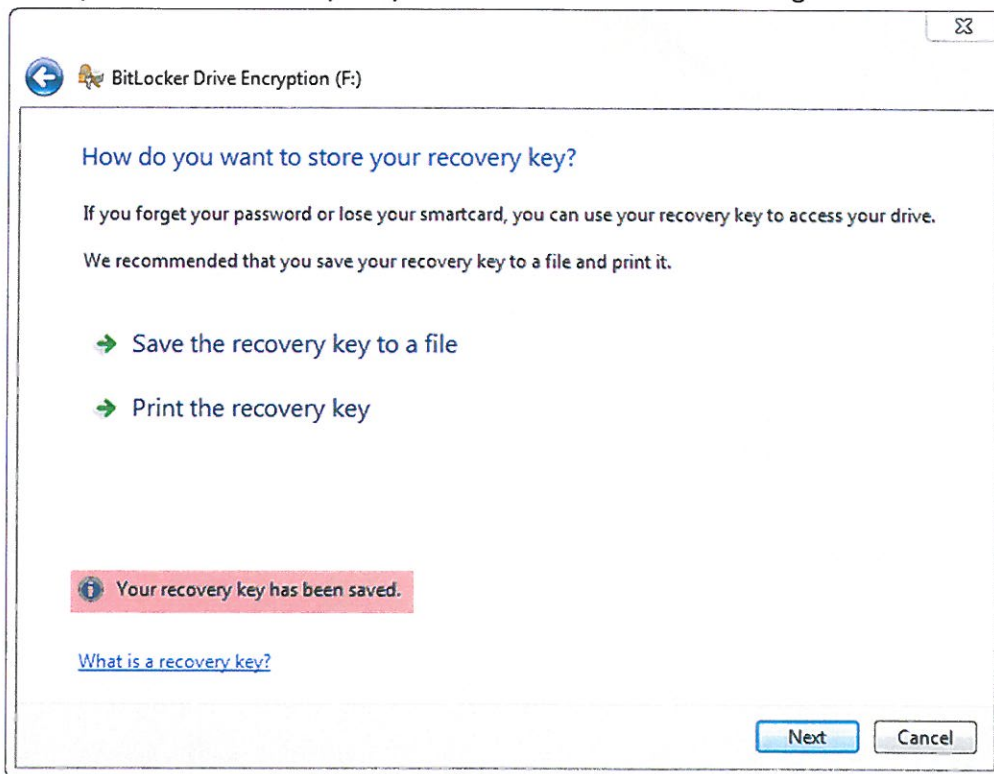


- 6) Choose to Save the recovery key to a file and save it to a secure place like your W drive.

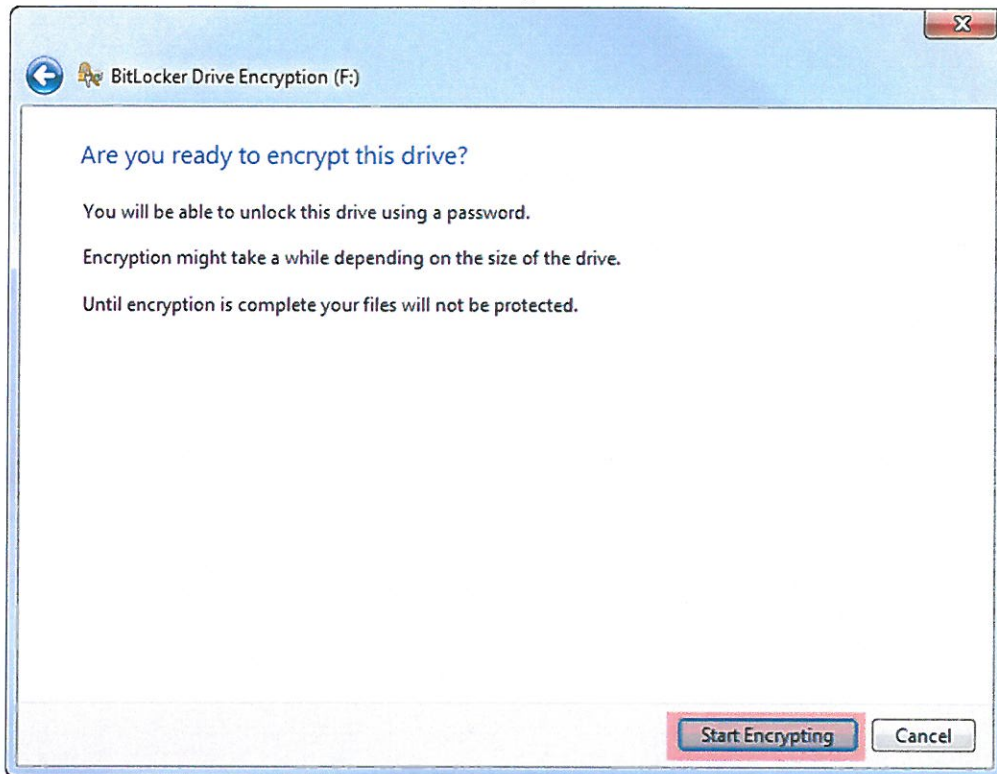
IMPORTANT – if you forget your password, the recovery key will allow you to regain access to your BitLocker To Go drive. If you forget your password and lose your recovery key then you will not be able to regain access to the data on your drive.



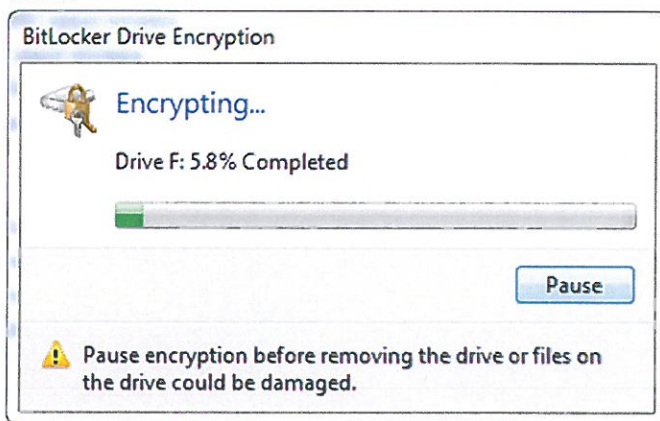
7) After you save the recovery file you will see a confirmation message.



- 8) When you are ready hit the Start Encrypting button



- 9) While the drive is encrypting a status bar will be displayed. If you need to remove the drive before it is finished encrypting make sure you hit the Pause button first or you risk corrupting the files on your drive.



- 10) A notification will be displayed when the drive has finished encrypting.

